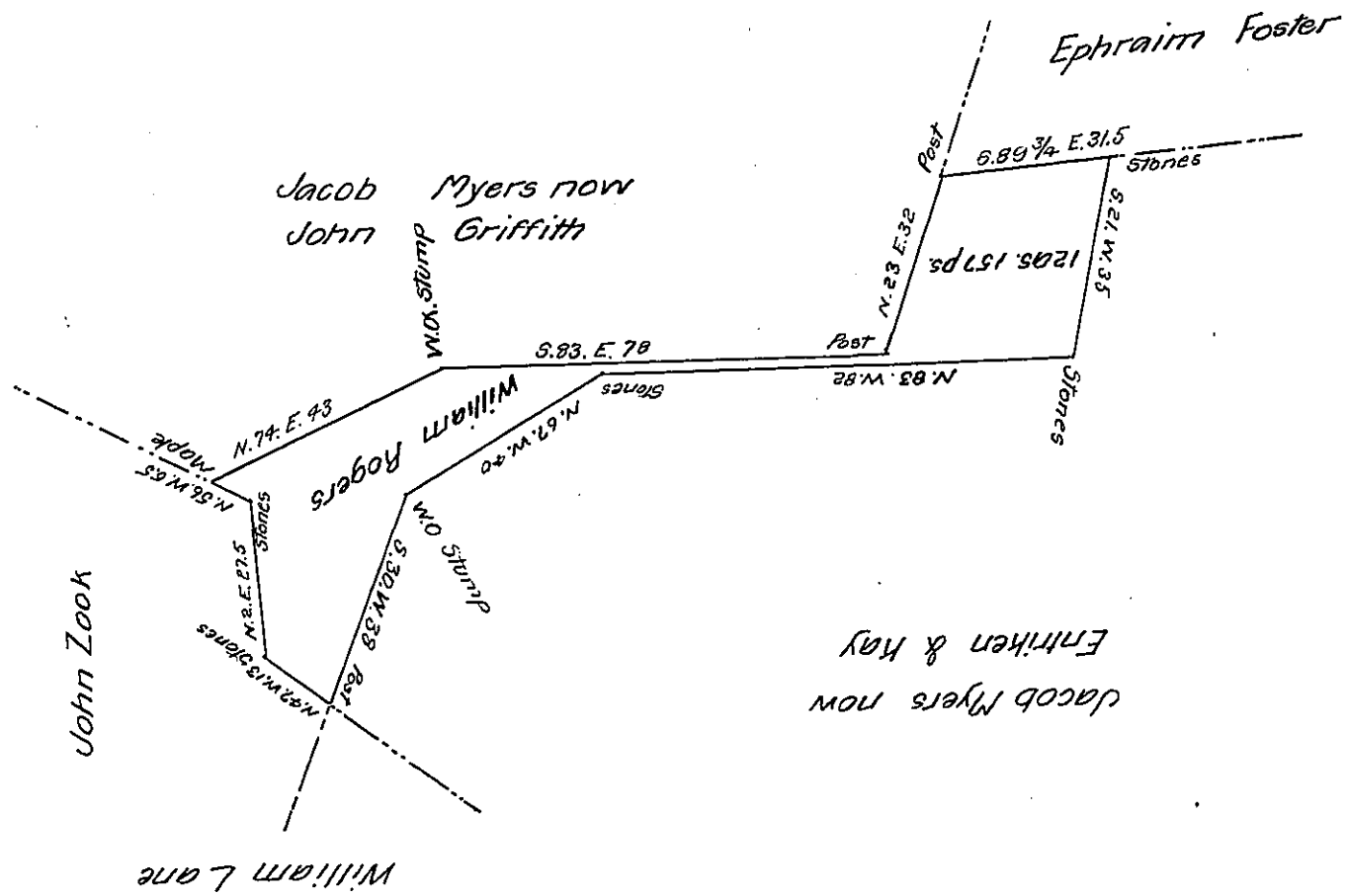


FORM NO 1.



Situate in Broadtop township Bedford County containing 12 acres 157 perch-  
 es & allowance of six per cent for roads &c. Surveyed by David Shreeves the  
 4<sup>th</sup> of January 1855, in pursuance of a warrant granted to William Rogers  
 for 15 acres dated 12<sup>th</sup> of May 1853. Courses according to the true bearings

Daniel Sams C.S.

To J. Porter Brawley Esq  
 Surveyor General

IN TESTIMONY that the above is a copy of the original remaining on file in  
 the Department of Internal Affairs of Pennsylvania, made  
 conformably to an Act of Assembly approved the 16th day of  
 February, 1833, I have hereunto set my Hand and caused  
 the Seal of said Department to be affixed at Harrisburg,  
 this second day of October 1907

*Henry Hoover*  
 Secretary of Internal Affairs.